

# NORTHUMBERLAND COUNTY FOREST ADVISORY COMMITTEE

## FACILITATOR'S SUMMARY



Introductory Workshop

Chairman - Peter Delanty  
Northumberland County Council

**MAY 16, 2007**

Designed and Facilitated by the  
Independent Public Facilitator  
Ogilvie, Ogilvie & Company

V. 1

## Agenda



---

6:00PM - 7:00PM..... **Dinner**

---

7:00PM - 7:10PM..... **Start-up – Chair - Peter Delanty**

---

7:10PM - 8:00PM ..... **Session 1 - Terms of Reference for the Forest Advisory Committee**

---

8:00PM - 8:45PM..... **Session 2 - What is a Forest Management Plan**

---

8:45PM - 9:00PM..... **Wrap Up**

---

## Introduction

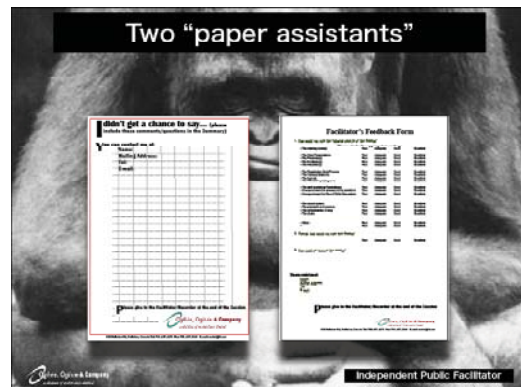
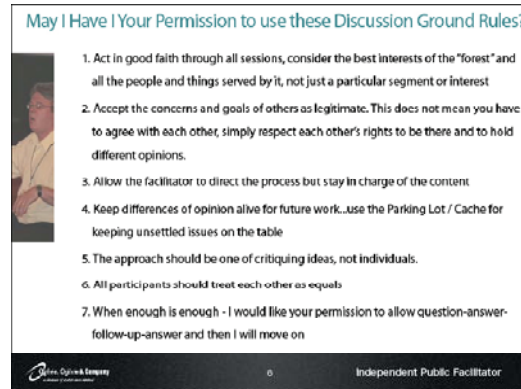
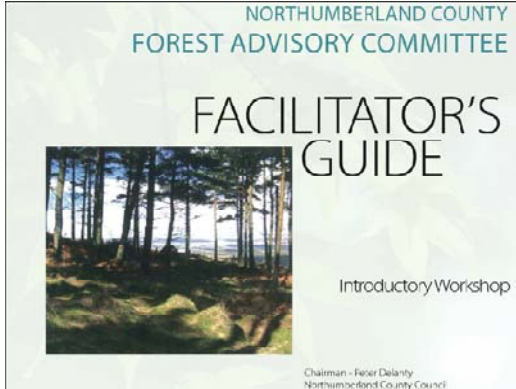
### Chair - Peter Delanty

- Thank you for participating.
- The mandate for the Northumberland Forest is to treasure it. It has an influence on the way we live.
- The goal is to find peace in the forests. We want all use it, enjoy it, protect it and preserve it.
- The Forest is used by all sorts of people and groups to recreate and enjoy. Every group is represented here tonight.
- We view it as urban, not only a rural forest.
- The goal is to leave it for our grandchildren in a state that we would be proud of.

# SESSION 1

## A draft Terms of Reference for the Forest Advisory Committee

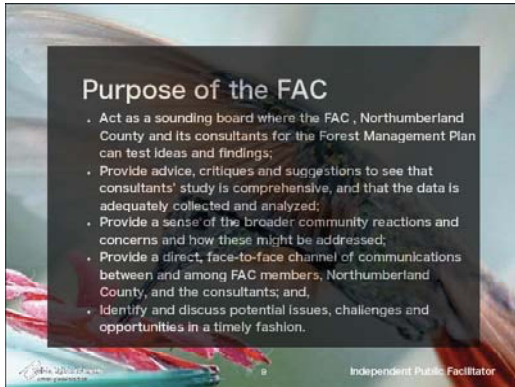
Ogilvie, Ogilvie & Company, Independent Public Facilitator - Robb Ogilvie



# SESSION 1

## A draft Terms of Reference for the Forest Advisory Committee

Ogilvie, Ogilvie & Company, Independent Public Facilitator - Robb Ogilvie

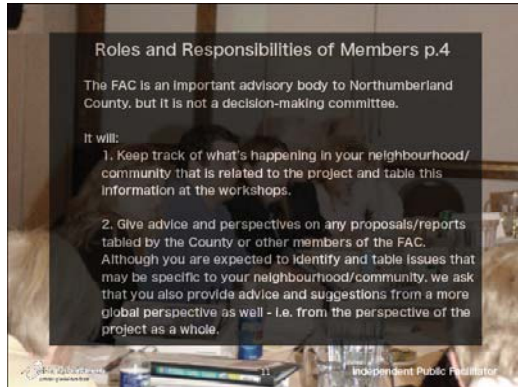


- The purpose of the FAC is to act as an early warning. This is a discussion between seven different networks.
- *How will we know that the data has been collected?*
- They should tell you how they did it. If they do not tell you, you should ask them, "Who else has reviewed this?" or, "Show me three other studies that used these set of criteria." It has to make sense.
- This is a nice cross section of members.
- There is a list of all the members in the Guide on page 4.
- Is there any segment that was missed? Any stakeholder that we should consider adding?
- *The Walking Club, it is a local group. They advertise in the paper and they meet at a certain time.*
- We have tried to include the main users of the forest and we added in agencies; we also wanted to include the municipalities. If there were two or more that were associated with a certain use, we just used one. This is what Council adopted.
- *I do not see streams and anglers, local fishers, not affiliated with OFAH.*
- Same answer, as above. One group will represent all anglers and hunters that might use the forest.
- *It is a true fact that there are several groups that would like to buy their right to this committee.*
- Management plan writers will be coming to each of these sessions, once they are hired. We are looking at another group of consultants. The management plan started in 2001 by another group of consultants did not cover as much as we had hoped. We are starting again; we want to include as many stakeholders as possible.
- The Management Plan is a new plan for the forest. It includes timber, stewardship, creation, fire, etc.
- *Are you starting anew?*
- Yes.
- *Do we have a consultant yet?*
- We had hoped to have them here tonight, but they had another commitment.
- *In terms of fire management, the forest is very dry in the summer. Maybe the fire department should be at the meetings, or come and speak with us on their opinion. We need to call on all of the resources throughout the whole county. We maybe should suggest that certain people come to a particular session.*

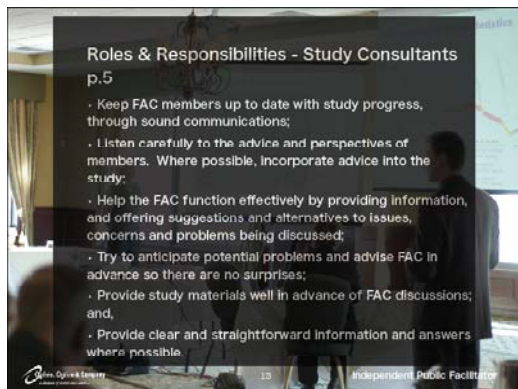
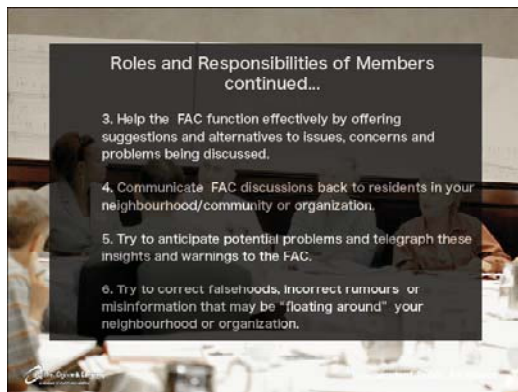
# SESSION 1

## A draft Terms of Reference for the Forest Advisory Committee

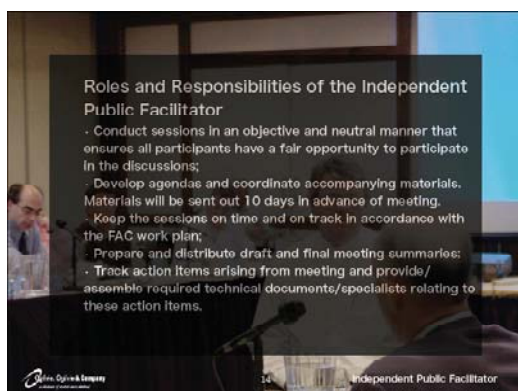
Ogilvie, Ogilvie & Company, Independent Public Facilitator - Robb Ogilvie



- Each one of you needs to keep track of what is happening in your neighbourhood and bring it to the next meeting. We do not want any surprises.
- Forest management is about the whole forest; it is a holistic ecosystem, we need to sustain the ecology.
- You are here to help the discussion move forward; to keep certain ideas in mind. Members need to raise the issues.
- Members need to participate, provide advice and intelligence to and from their communities.



- On particular issues we want them as a participant.
- The FAC members will need time to go through study materials.

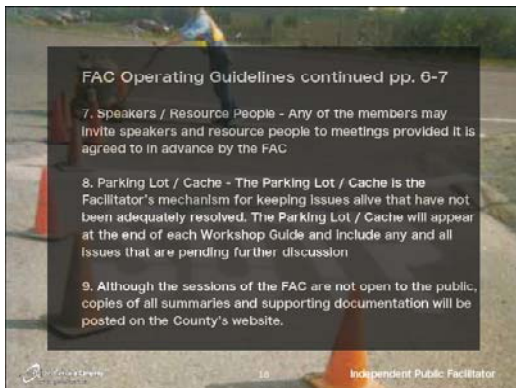
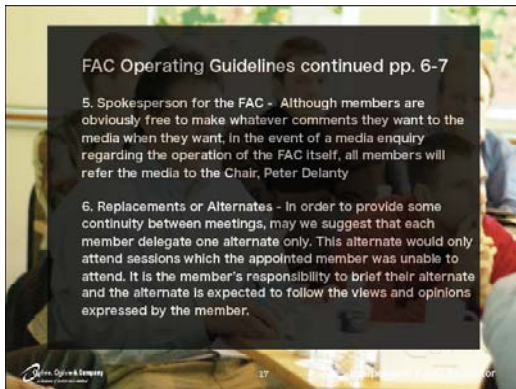
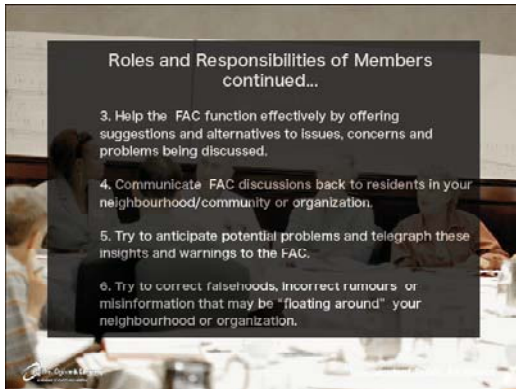
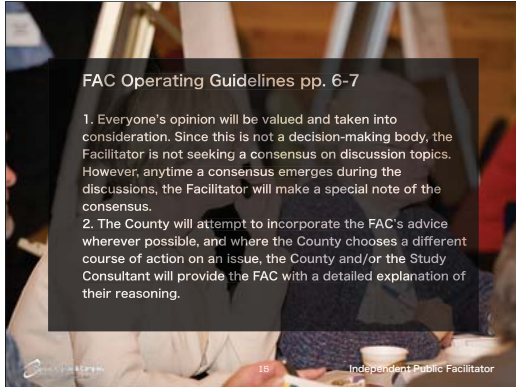


- FAC members will have the Workshop Guide ten days in advance of the next meeting, either by mail (courier) or electronically (email).

# SESSION 1

## A draft Terms of Reference for the Forest Advisory Committee

Ogilvie, Ogilvie & Company, Independent Public Facilitator - Robb Ogilvie



- We are not looking for consensus, but a 360-degree of opinions. We will record consensus. Never force a consensus; let it emerge.
- *With respect to the second bullet, would they get the FAC's advice before they make the final decision?*
- We would encourage this whenever possible, but it might not always be possible. The County should come back and explain any decisions so we can understand the stance they took. This is just a safeguard.
- These sessions are not called "meetings", but "interactive workshops". We want to have peace in the woods, how do you get there? How do we create a conversation? We want you to have conversations about peace in the forest; what is involved?

- The Facilitator is not involved in the content, only in the process. The Facilitator can only receive power from the FAC.

- Official statements should only be made by Peter; this will save a lot of confusion.
- This process will run for a year, you may need to figure out an alternate if you cannot attend a session. Brief the alternate on the previous session and how they are to act. The alternate needs to understand the ground rules. Bring them up to speed so that they fit in.
- *Is it appropriate to give the Guide to the alternate?*
- Yes.
- Citizen representatives were interviewed. We need to find a way to deal with those that are appointed as a citizen representative.

- We carry a "parking lot" on the last page of the summary.
- We do not normally have the sessions as open; we have public meetings that are open. This is a smaller cross section that gets into the details.
- These meetings are not open, but they are on the website. The website is public domain. We do not use names in the summary. We protect the privacy issue.
- We will be having open meetings with the public. We need to decide the number and how often. The first one will likely be in November after the second FAC meeting. We will show you the emerging schedule.

# SESSION 2

## What is a Forest Management Plan?

Northumberland County - Judy Snider



# What is a Forest Management Plan

### What is a Forest Master Plan?

- A working document intended to guide all development and management activities within a forested area
- Sets out management goals and approach for achieving them --> providing a framework for decision making

Source: Kawartha Highlands Management Planning

- The master plan process is a slow process. We want to do it, but we want to take our time and we want to do it right.
- We need to review the process and what is included in a forest master plan.
- We need to discuss the schedule.

### Why Have a Forest Master Plan

- Intended to guide management activities and uses within the Forest for at least a period of 20 years
- Management plans address topics such as:
  - Zoning and Development
  - Resource Use and Management
  - Forest Operations
  - Risk Management
  - Seasonal Activities
  - Revenue

- A Forest Master Plan (FMP) is a working document.
- We will set up a framework to make decisions on the management.
- There are a variety of management plans. The Region of Halton has one, as does the City of Kawartha Lakes.
- The FMP is set up for least a 20-year period.
- There are a variety of topics. Risk management is very important.

### Stages of Planning

- Stage 1: Terms of Reference Background Information
- Stage 2: Studies and Public Consultation (review/research/report/analyze/survey etc)
- Stage 3: Management Options
- Stage 4: Preliminary Management Plan
- Stage 5: Approved Management Plan

- There are different stages of planning.
- The FMP will have its own Terms of Reference (ToR) for background information.
- There will be public consultation and a variety of studies.
- The ultimate goal is to have an approved management plan.

### General FMP Process

- Will include components such as:
  - Detailed assessment of natural heritage features
  - Extensive consultation with forest users, technical experts, members of the public
  - Identification of sensitivities, constraints and opportunities

Source: Halton Regional Forest Master Plan

- We will consult with the public and users of the forest.
- We will identify environmental constraints.

# What is a Forest Management Plan

**General FMP Process continued**

- Identification of mapping and management areas
- Development of vision, goals and objectives
- Review and discussion of appropriate sustainable approaches for silviculture and sustainable timber management

Source: Halton Regional Forest Master Plan

- In terms of mapping, we will identify areas to be managed.
- We will develop a vision.
- In terms of timber management, bring us back to the revenue side of things.

**Rundown on Components**

- Introduction
- Natural Heritage/Physical Features
  - Natural heritage assessment
  - Trail study/inventory
  - User surveys
  - Property boundaries
  - Vegetation and wildlife inventory
  - Identify concerns and opportunities
  - Status of fauna and flora (RVTE, provincial status etc)

- Master plans include the following:

**Components continued-2**

- Historical Review
  - Both cultural and environmental
  - Past management activities, other uses
- Public Consultation
  - How public was included in management process
- Vision
  - Defined through interaction with public, stakeholders, steering committee.....

- How public is included in the environmental process is very important.

**Components continued-3**

- Goals and Objectives
  - Usually reflects past management objectives
  - In consultation with public/stakeholders
  - Influenced by legislation and ecological significance of site (i.e. provincially rare spp.)
- Deliverables
  - Actions taken to implement objectives
  - i.e. Rec. Use Policy, Risk Management, Trail Maintenance Program, Communication etc

- We will look at how the trails are to be maintained.
- There will be communication to users and the public.

# What is a Forest Management Plan

### Components continued-4

- **Silviculture**
  - Prescriptions based on forest communities
  - Evaluated by professionals
  - Addresses ecological issues such as forest health, wildlife habitat and biodiversity, as well as timber production
  - The harvest of trees is not as the end of stand or tree life, but the beginning of a new forest

Source: MNR-Ontario's Forests

- Professional foresters are to do the evaluation. Once you cut it down, it does not mean it is vacant.

### Other Possible Components

- Guiding Principles
- Economic Impact Analysis
- Capital Plan to Implement
- Future Concerns and Opportunities

Lastly each plan ends with 5 year and 20 year operating schedule

- 5 year plan to be renewed before end of previous term

- There are a variety of other components.
- The economic component is very important for communities and their forests.

### The NCF FMP Schedule

- May: First FAC Workshop
- May-August: Trail Studies Unit Field Work
- June: Field tour to forest for all FAC Members
- September: Second FAC Workshop
- November: Third FAC Workshop, Public Meeting on Trail Studies Findings
- December: Update to Council

- NCF – North County Forest

### Take Home Message

If you don't know where you are going, you'll end up someplace else.

**Yogi Berra**

- Trail studies are being completed by Trent University.
- The FAC members are invited to a tour of the forest in June.

## What is a Forest Management Plan



- *Are you starting fresh on all issues? Or are you using some historical data as well?*
- There is quite a bit of information from the draft plan, such as vegetation and mapping information. There are some natural heritage studies to expand upon. We have a lot of information, but it is dated. It is a good idea to do the research, especially with the trails; the uses have increased four-fold.
- *I question the time to set all this up? Are there only four meetings? Is this only to the end of the year? What will we accomplish?*
- There is quite a bit of information from the trail study that will be completed over the summer. We are in a position to start to do some facilitation on the consultant's recommendations and the environmental impacts. There are many issues to discuss. We have a lot of the "Rundown of Components" completed. The management options will be completed. Studies will be completed over the summer and consultation in the fall. We will start to get into some of the management options during this year, at the exploratory level. Stages 3, 4 and 5 will happen next year.
- *I see a ton of work. I do not know if four meetings are enough? You cannot do everything in four meetings.*
- By the time we meet in November there will be some things to discuss around trail use. We still need to get the public meeting input as well. And we will need to provide an update to council.
- More realistically, it will be ten to twelve meetings. We are just getting started, but we want to keep this from becoming a burden to FAC. We are likely looking at eighteen months. Some of the things are coming forward in the fall, like standards for the trails. There are combinations of things that can go together. We need to report on some of the damage. What might fit in this area? Or staying away from certain areas. There will be options for you to consider in the fall.
- *Under the FMP, how is it intended to guide, running for 20 years, will it not be using old outdated information?*
- We create a 20-year management plan. A 20-year plan gives us a road map, a direction of where we need to focus. It is a living document. We will be working on it on a continuous basis and it will be updated continuously. Recreational use will continue to grow. Environmental issues will change.
- *Is there not a regular updating process to make it current?*
- There are always options for updating; it is not static. It will not be 18 years out of date. A 5-year plan allows you to do a review of the plan, refresh the information and budget, and plan 5 years forward. It is a 5-year sequence.
- *At what point do government regulations or laws apply to the forest? Should that not be a first consideration?*
- We are going to have to look at the legislation for the Oak Ridges Moraine (ORM) Conservation Plan. We may bring in an expert to speak to the committee and have that discussion very early.
- *What is the proposal? Is it a legal or policy authority of a management plan? In terms of the enforcement, is it the County, the Municipality? What is the regulation? Is this possible? What about the municipal bylaw process?*
- It is County property that must comply with local planning and zoning laws. It is too early to say.
- *Does the plan have some teeth or is it fluff?*
- There is an enforcement component to it. We are not sure how that will happen. It should have some teeth; to what degree and how that can be done will be decided in the planning process.

## What is a Forest Management Plan

- We plan to have a field trip in June. We will be showing the roads and ponds in certain areas. Certain areas are designated. We do have mapping and trails mapping that we can use for the field tour. There are no designated areas in the forest. Some are used historically by certain groups. Many years ago there was a colour coding of uses, this was about 10 to 12 years ago. It was never done/completed. It was also talked about road intersections being marked in case of problems or fires. There are some data available now, including uses and designations. We have not had those discussions yet.
- *When was the last plan? 20 years ago?*
- The last plan was done by the Ministry of Natural Resources (MNR). The 20-year period ended in 2002. Copies of the plan are available; we can put them on the website. We will use a lot of that research, such as the mapping. A management plan never resulted from that research, but we will build on that research. No actual plan resulted. We are doing a new plan. This is a new committee, a new process. We will build on what was learned in the past and what was done, but not necessarily adopted the conclusions.
- *Is a master plan more encompassing than a management plan?*
- A management plan is more narrow. A master plan is more encompassing. We are talking about all natural resources/outdoor recreational plans, not just forestry. Labels can be a problem. It is a plan to manage all natural resources and all outdoor recreational plans. Previously it was timber management plans. We are now looking at a master plan. The previous plan was not a master plan. We will follow the plan every year.
- *Should we change our language to be consistent?*
- Management is part of the master plan. We should change all to say Forest Master Plan.
- *What will the trails study include? I see signage that does not have Northumberland on it. The signage is really Northumberland signage. It would be useful as a group to know what things really do belong to the forest and what things are not official. There are a lot of spontaneous signs and trails.*
- That is what the study will include. It will address signs and boundaries, any sensitive areas, everything that is on the ground that needs to be addressed. Trent University students will conduct studies and out in the field. The committee should have the outline of the ToR. When it is finalized the FAC will have copies of it. In terms of thoughts on trails, there are different perspectives. This will be discussed with John Marsh, who is the lead on study. He will make sure your opinions are included.
- *In terms of the signs and enforcement, there are a lot of uses that go on in the forest. We need a better understanding of what is going in the forest.*
- *To continue on the sign thought, there are two or three spots where identification signs were planted in 1935. They are in bad shape. Someone needs to fix them and get them protected; they are like a history map. We should be doing this sooner than later. We will have to duplicate them and then put them back.*
- *Would it make sense to post something in the County forest to get the thoughts in the heads of people? Or use press releases, website, notify clubs when they request event permits? Let the public know through Council and the media what studies are happening.*
- *There is a big cloud hanging over our heads for motorized and non-motorized activities in terms of the legalities of the ORM Act and of natural interest. We need to find out very early what those legal opinions are. We have two or three sources. One interpretation when the Act was implemented was if a township did not have a permit for operating motorized vehicles it was null and void. We are already getting different opinions.*
- *There needs to be discussion about the fact that a few years ago, MNR downloaded the forest onto the County and the Municipality without a lot of money. That is history. Part of going through the master plan, are we open to discuss options for management of the County Forest? There are other options. We have the opportunity to create something different, something unique. The ORM legislation, there are any number of interpretations. It is hard to get an answer from Ministry of Municipal Affairs and Housing (MAH).*
- We have an environment lawyer who is willing to talk to us, to give us an opinion. This is a challenge for us to address. It can be tricky to interpret. There are legal, planning and ethical interpretations. We need to live to the spirit and intention of the ORM act.

## Wrap Up

- This has been a good start. We are laying the ground rules.
- The tour of the forest will be a real eye-opener as to how fragile the forest is.
- *How are we doing the tour? Walking? ATV?*
- Some of the areas are difficult to get to. We will work out the details.
- We are encouraged by your comments.
- If we can think outside the box, as to how to make the forest better for all of us.
- The meeting was very positive.
- We look forward to other meetings in June.
- *Could we have a date for the forest tour? A tentative date?*
- Saturday June 16, 2007 in the morning. Judy will work out logistics.
- Next session, Thursday September 27, 2007 from 7:00 to 9:00 p.m. Judy will pick the spot.